

MIPOLAM® AMBIANCE ULTRA



2062 Beach



2060 Sahara



2054 Cloud

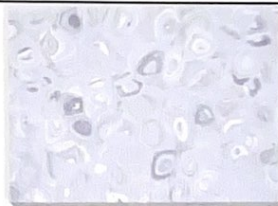


2070 Ink Blue

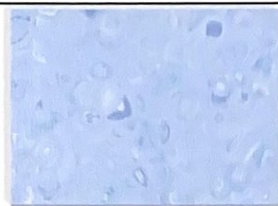
MIPOLAM® CONCEPT



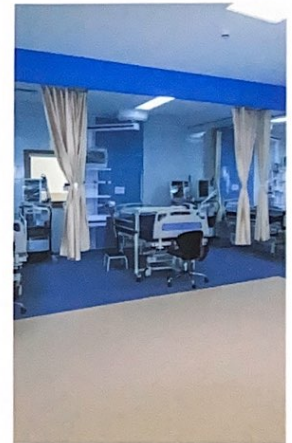
5031 Mocca Foam



5041 White Sky



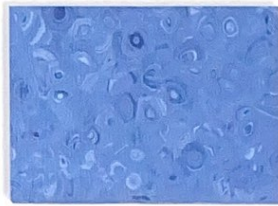
5025 Lagoon



5030 Toffee

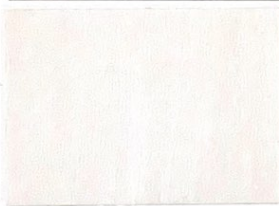


5035 Springfield



5024 Blue Lake

MIPOLAM® 180



2005



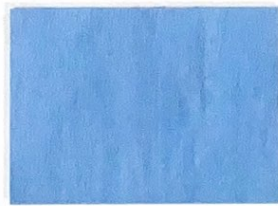
2015



2031



2007



2010

MIPOLAM® ROBUST EL7

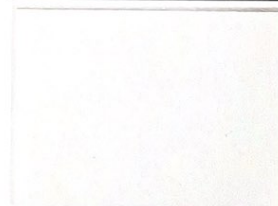
MURAL PLUS



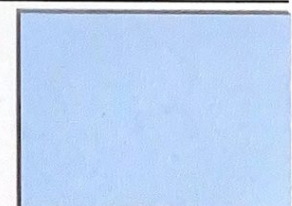
0003 Ivory



0112 Storm



3001



3005

MIPOLAM® AMBIANCE ULTRA / MIPOLAM® 180 / MIPOLAM® CONCEPT /  
MIPOLAM® ROBUST EL7 / MURAL PLUS

gerflor.com  
gerflor.asia

			MIPOLAM® AMBIANCE ULTRA	MIPOLAM® CONCEPT	MIPOLAM® 180	MIPOLAM® ROBUST EL7	MURAL PLUS
<b>DESCRIPTION</b>							
Total thickness	ISO 24346 [EN 428]	mm	2	2	2 / 2.5 <sup>(1)</sup>	2	1
Weight	ISO 23997 [EN 430]	g/m <sup>2</sup>	2750	2980	3150 / 3950	3300	1750
Width of sheet	ISO 24341 [EN 426]	cm	200	200	200	200	200
Length of sheet	ISO 24341 [EN 426]	lm	20	20	20	20	30
<b>CLASSIFICATION</b>							
Norm / Product specification	-	-	ISO 10581 [EN 649]	ISO 10581 [EN 649]	ISO 10581 [EN 649]	ISO 10581 [EN 649]	-
European classification	ISO 10874 [EN 685]	class	34 - 43	34 - 43	34 - 43	34 - 43	-
Fire rating	EN 13 501-1	class	Bfl-s1	Bfl-s1	Bfl-s1	Bfl-s1	-
Static electrical propensity	EN 1815	KV	<2	<2	<2	<2	-
Electrical resistance	EN 1081	Ω	10 <sup>9</sup> -10 <sup>10</sup>	10 <sup>9</sup> -10 <sup>10</sup>	10 <sup>9</sup> -10 <sup>10</sup>	10 <sup>9</sup> < R <sub>s</sub> < 10 <sup>9</sup>	-
Slip resistance dry	EN 13893	-	≥0.3	≥0.3	≥0.3	-	-
Slip resistance wet	DIN 51130	class	R9	R9	R9	R9	-
<b>PERFORMANCES</b>							
Type binder content	ISO 10581	type	I	I	II	II	-
Dimensional stability	ISO 23999 [EN 434]	%	≤ 0.4	≤ 0.4	≤ 0.4	≤ 0.4	≤ 0.40
Residual indentation	ISO 24343-1 [EN 433]	mm	-	-	-	-	≤0.10
Castor chair test	ISO 4918 [EN 425]	-	OK	OK	OK	-	-
Thermal conductivity	ISO 10456 [EN 12524]	W/(m.K)	0.25	0.25	0.25	0.25	-
Colour fastness	ISO 105 - B02	degree	≥ 6	≥ 6	≥ 6	≥ 6	≥ 6
Chemical products resistance	ISO 26987 [EN 423]	-	OK	OK	OK	OK	OK
Surface treatment	-	-	Evercare™	Easycare™	Easycare™	-	PUR Protect
Anti-bacterial activity (E. coli - S. aureus [12])	ISO 22196	-	>99% Inhibits growth	>99% Inhibits growth	>99% Inhibits growth	-	-
Antiviral activity (human coronavirus 229E)	ISO 21702	-	99.7% after 2h	-	-	-	-
<b>ENVIRONMENT / INDOOR AIR QUALITY</b>							
TVOC after 28 days	ISO 16000 - 6	µg/m <sup>3</sup>	<10	<10	<10	<10	<10
Certification	-	-	Floorscore®	Floorscore®	Floorscore®	Floorscore®	Floorscore®
<b>CE MARKING CE标志</b>							
CE	EN 14041	-					-

(1) MOQ 3200 m<sup>2</sup>

(2) The implementation of an effective cleaning regime is the most important defence against infections.

AUG 2022-08-30 Version - Indicative documentation cost USD 1.15  
Gerflor® has a policy of continuous product improvement, it reserves the right to change design and specifications without notice.

**Gerflor.** Don't forget our complementary ranges!



**WE CARE | WE ACT.** Our Commitments for a Sustainable future

 <b>CARBON FOOTPRINT*</b> -20 % kg CO <sub>2</sub> equivalent/m <sup>2</sup> between 2020 and 2025	 <b>BIOSOURCED CONTENT**</b> 10 % by 2025	 <b>RECYCLED CONTENT</b> 30 % by 2025	 <b>ADHESIVE FREE**</b> 35 % by 2025	 <b>ANNUAL VOLUME RECYCLED</b> 60 000 t by 2025
* Scopes 1 and 2 defined in the GHG protocol *** % of activity with biosourced materials ** % of activity - adhesive free solution				

Be connected!



#Gerflor



www.gerflor.com

**Gerflor**  
theflooringgroup

GERFLOR ASIA Tel.: + 86-21-63578818